

Nicholls Field, Harlow, CM18 6EF

Currently tenanted. Investment opportunity. Offering some of the best views in town is this one-bedroom top floor (14th floor) flat with an EXTENDED LEASE. The block has two lifts installed providing quick access to the top floor. The flat itself feels nice and bright with a double bedroom, lounge diner, fitted kitchen, bathroom and a large walk-in storage cupboard and as previously mentioned views from all windows are fantastic. The block itself has communal parking on street, a security key to get into the lobby.

Outside the property is next to open playing fields and sports ground.

£125,000

Nicholls Field, Harlow, CM18 6EF



- Currently Tenanted
- Top Floor (14th)
- Fitted Kitchen
- Family Bathroom
- One Bedroom Flat
- Gas Radiator Central Heating
- Double Bedroom
- Excellent Panoramic Views
- Lounge Diner
- Walk-in Storage Cupboard

Accommodation Comprises:

Hallway

12'5 x 3'0 (3.78m x 0.91m)

Kitchen

10'7 x 6'4 (3.23m x 1.93m)

Bathroom

6'4 x 5'6 (1.93m x 1.68m)

Lounge

11'7 x 14'9 (3.53m x 4.50m)

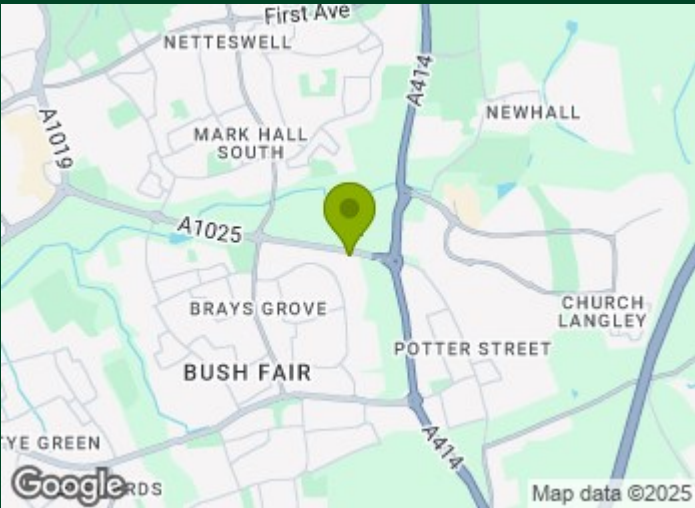
Bedroom

12'7 x 10'10 (3.84m x 3.30m)

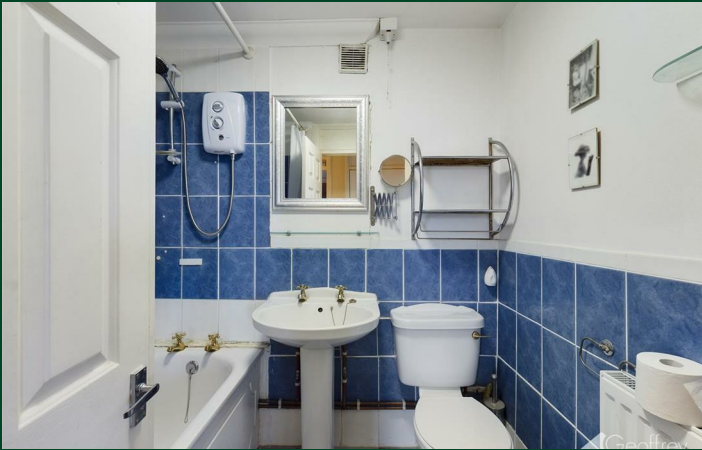
Agents Note

We are advised of the following;

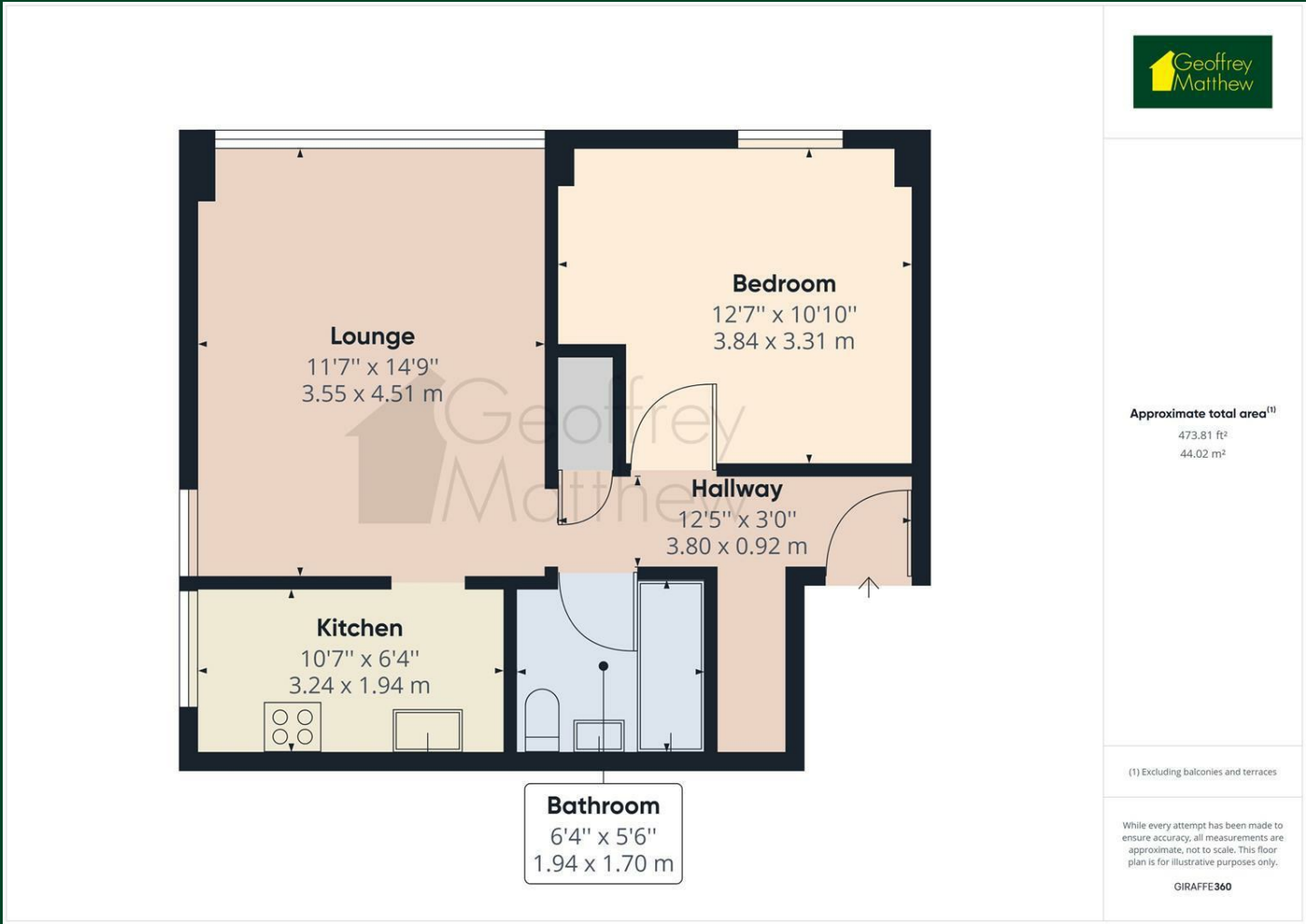
Lease has approx 177 years remaining
Service Charge approx £140 per month
Peppercorn ground rent



Directions



Floor Plan



Council Tax Details

Harlow Council Band A

These particulars, whilst believed to be accurate are set out as a general outline only for guidance and do not constitute any part of an offer or contract. Intending purchasers should not rely on them as statements of representation of fact, but must satisfy themselves by inspection or otherwise as to their accuracy. No person in this firms employment has the authority to make or give any representation or warranty in respect of the property.

